

Mannix College Internet Connection Guide.


For computers running Windows Vista.

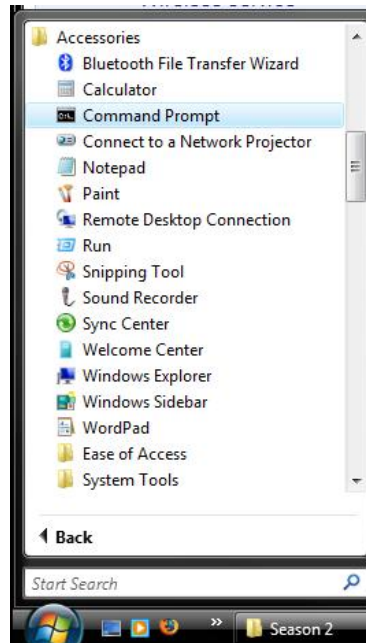
Section 1 – Setting up your computer.

1. Ensure that you have an Ethernet (Blue 'Internet') Cable. These can purchased from the front office for \$5 if you don't have one.
2. Plug the cord into the wall socket and then into the computer.

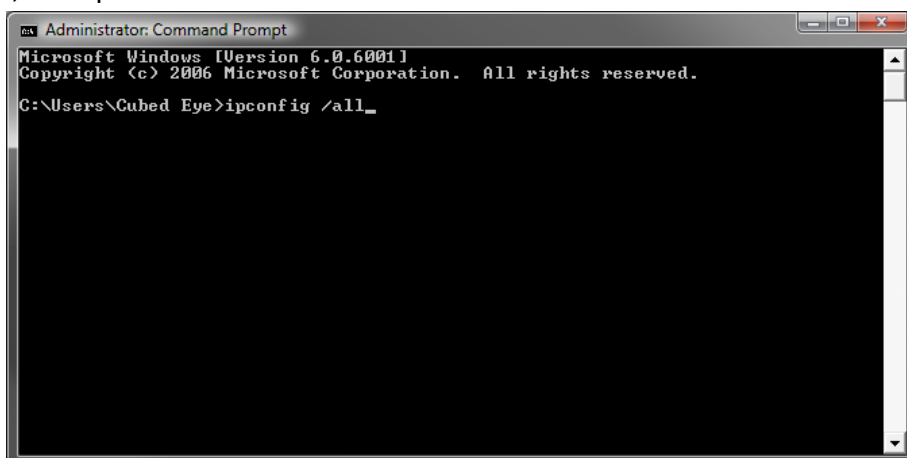


3. Start up your computer into Windows.

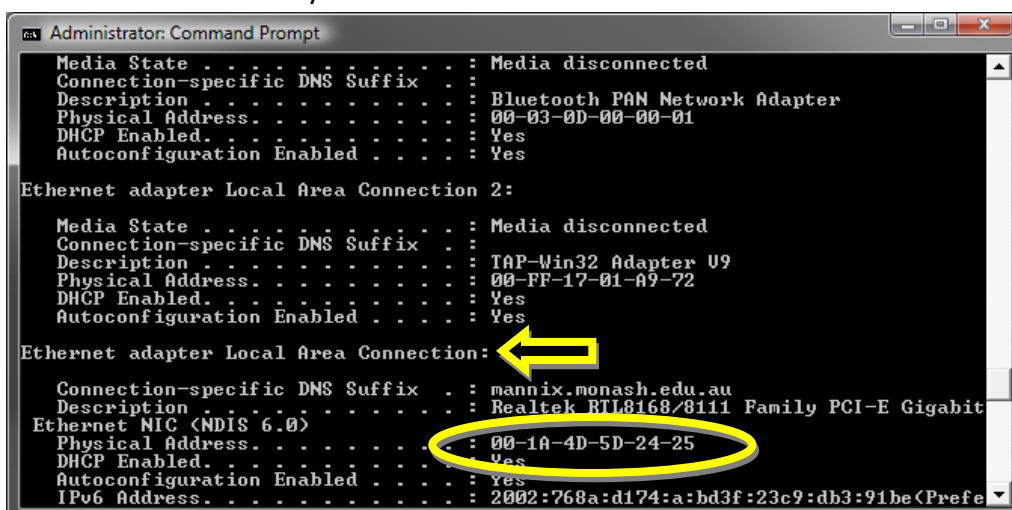
4. Click the  icon, then 'All Programs > Accessories > Command Prompt'.



5. Type 'ipconfig /all' (without quotes, and don't forget the space) into the command window, then press Enter.



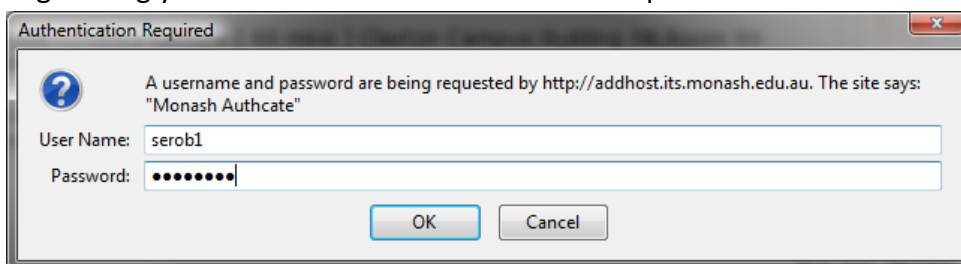
6. Find the line that says "Ethernet adapter Local Area Connection", and then write down value for the "Physical Address".



7. Go to a computer that is connected to the internet (either a friends, or the computer room that is located on Bot East), and go to the website:

<http://addhost.its.monash.edu.au/cgi-bin/register>

8. Login using you Monash Authcate username and password.



9. Type the Physical Address you wrote down earlier (without the dashes or any spaces) into the "Ethernet Address" box, in the row that has "[your username]-wired-self.mannix" in the hostname column. Then click "Register".

Network self registrations for usercode "serob1", AdminAffil "infotech-stud", MRS Affil "mannix-stud"

Students enrolled in a course can self-register one Ethernet card for wireless use.

Also, residents in MRS accomodation and students in South Africa can self-register one Ethernet card for wired use.

Staff can not create new self-registrations for themselves.

For extra self-registrations, contact your local MRS or Faculty IT Support or TWP representative.

Your Network Self Registrations

| Hostname | Ethernet address | Contact information | Connection | |
|---------------------------|------------------|---------------------|------------|---|
| serob1-wired-self.mannix | 001a4d5d2425 | none | Unknown | <input type="button" value="Register"/> |
| serob1-wlan-self.infotech | none | none | none | <input type="button" value="Register"/> |

Note: The Ethernet address must be 12 hexadecimal (0..9 or a..f) characters long (if necessary, insert leading 0's to make 6 pairs of digits).

Note: It takes 30 minutes before any new or changed registration will work on the network.

The Contact information may be used to contact you if some problem is found with your network registration, or with your computer's use of the network.

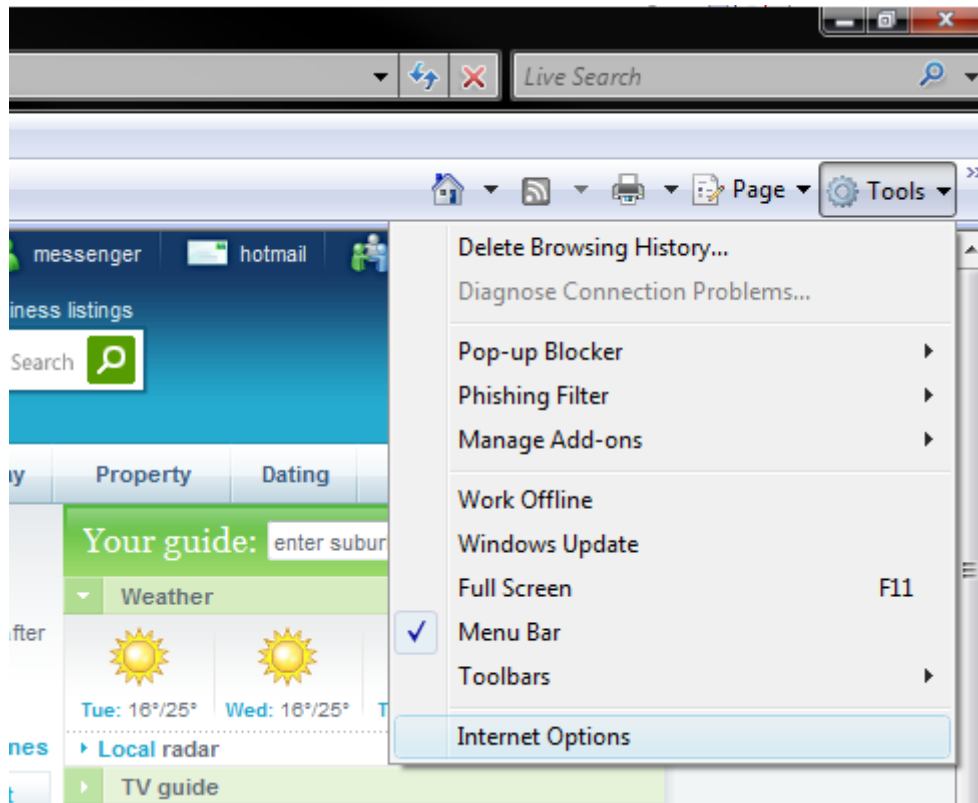
***** Please note, if you don't have a "Hostname" with the word "[your username]-wired-self.mannix" in it, please see the front office. *****

10. After approximately 30 minutes restart your computer.

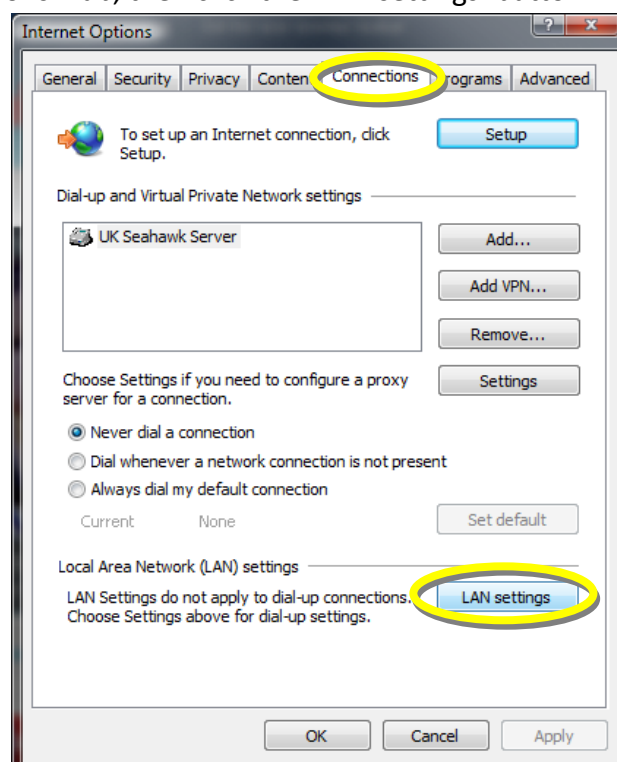
Section 2 – Configuring Your Web-Browser.

For Internet Explorer:

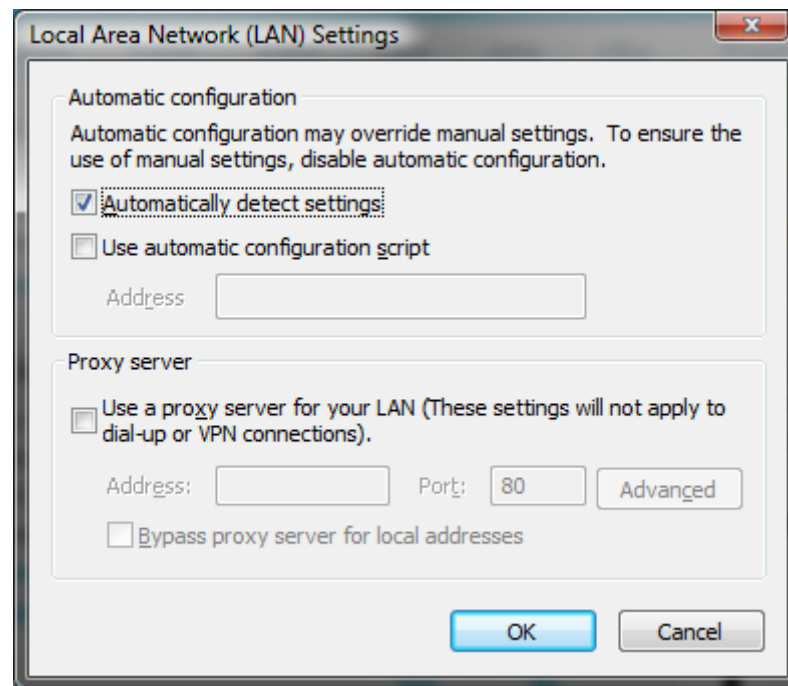
1. Start Internet Explorer, then click 'Tools > Internet Options'



2. Click the 'Connections' Tab, then click the 'LAN settings' button.



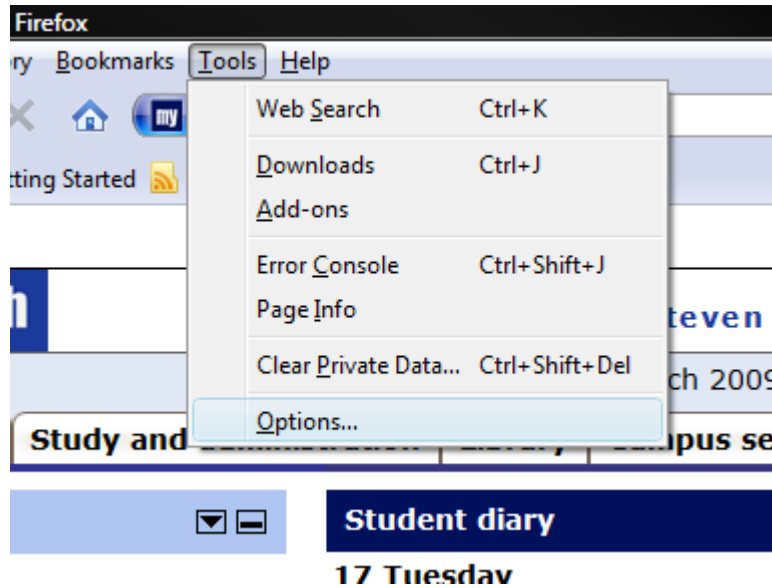
3. Make sure “Automatically detect settings” has a next to it, disable all the other options.



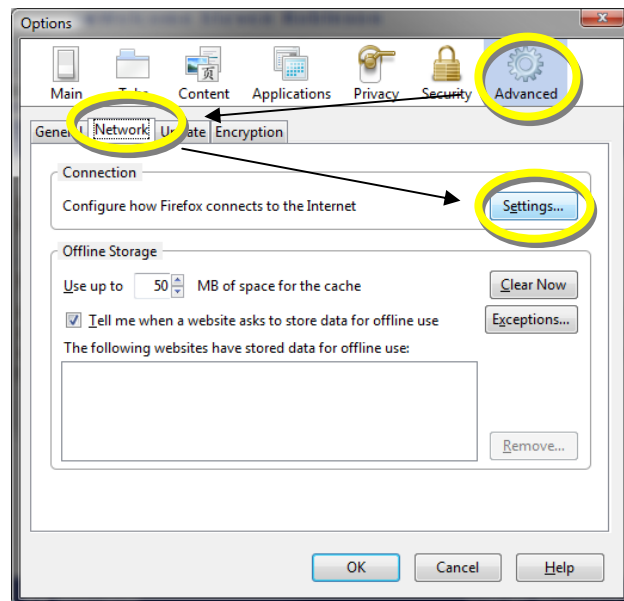
4. Click OK on all the open windows, then close your web-browser and re-open it. Your internet should now be working.

For Mozilla Firefox:

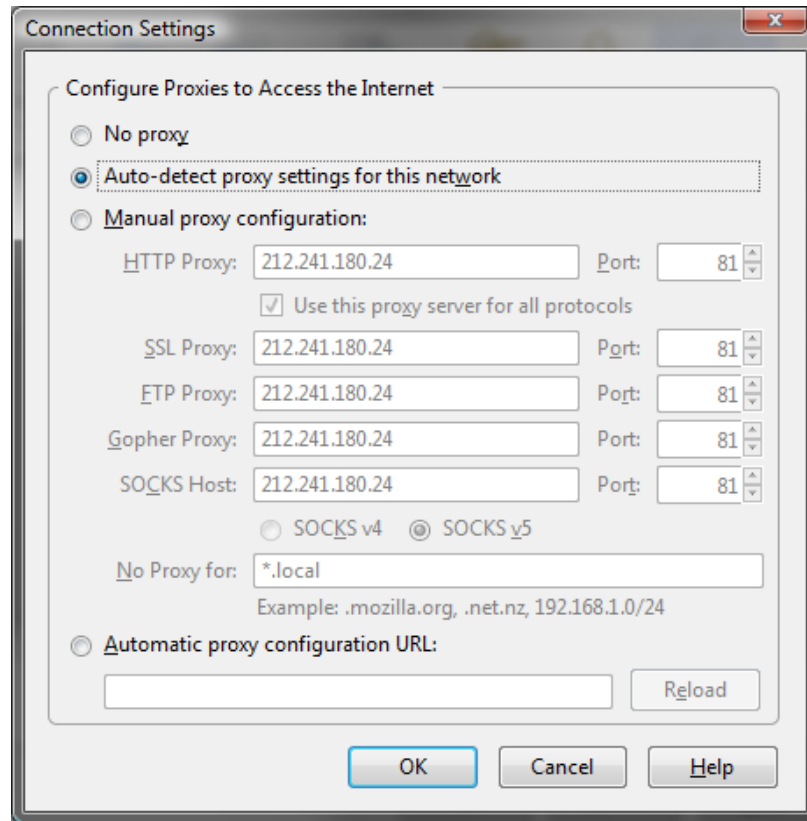
1. Start Firefox, then click 'Tools > Options'



2. Click the 'Advanced' Tab, then click the 'Network' sub-tab, then click the 'Settings' button.



3. Select "Auto-detect proxy settings for this network".



4. Click OK on all the open windows, then close your web-browser and re-open it. You internet should now be working.