

Mannix College Internet Connection Guide

For computers running Windows 95, 98 and Me

Step 1- Find the Ethernet Adapter Address of your network card.

- Click the **Start** button and then click on **Run...**
- Type “**cmd**” and then click the **OK** button.
You are now in IP Configuration dialog box.

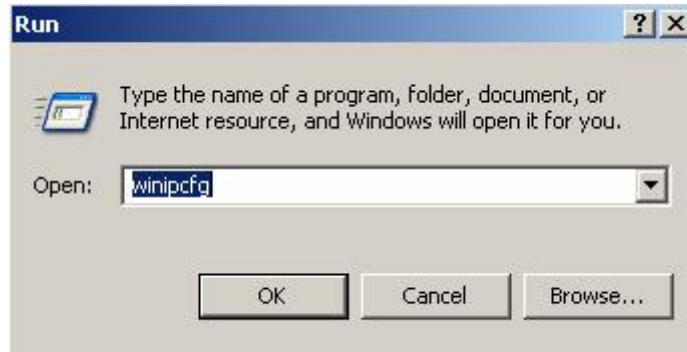


Fig 1. The Run Dialog

- When this screen appears, it may have the PPP Adapter settings displaying, this is not the correct Adapter Address. You will need to find the correct network card information in the drop down menu; it should look similar to what can be seen in figure 2.

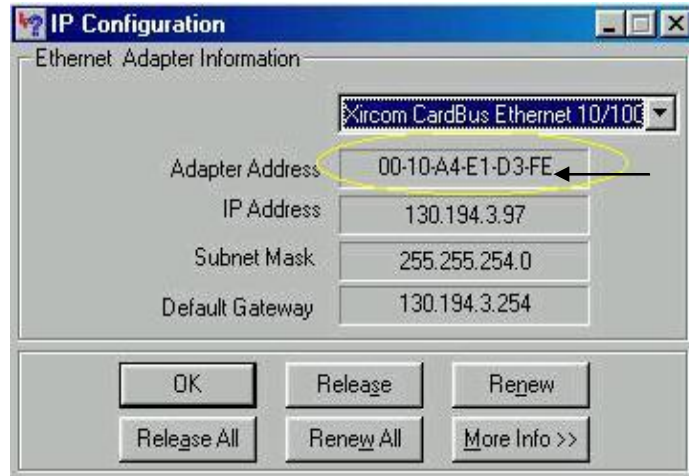


Fig 2. The IP Configuration Dialog

- You need to write down the **Adapter Address** of your network adapter. In Figure 2 the physical address is circled and has an arrow pointing to it; it is 0010a4e1d3fe.

Step 2 - Register your Ethernet adapter Physical Address on Monash addhost.

To complete this step you will need access to the internet. You can use a friend's computer that is already on the network, the Mannix College Computer Lab on Bot East or a Monash University Computer Lab.

Once you are on a computer that has access to the internet. You will need to open up Microsoft Internet Explorer or another internet browser. Then go to the following internet address

<http://addhost.its.monash.edu.au/cgi-bin/register>

You will then be asked to enter your Monash University user name and password on the form in Figure 3, which will pop up before you get into the site. It is very important that you login using your Username only.



The screenshot shows a Windows security dialog box titled "Connect to addhost.its.monash.edu.au". The dialog box has a blue header with a key icon and a question mark icon. The main content area is white and contains the following text:

The server addhost.its.monash.edu.au at Monash Directory Service (Authcate Monash Only) requires a username and password.

Warning: This server is requesting that your username and password be sent in an insecure manner (basic authentication without a secure connection).

User name:

Password:

Remember my password

At the bottom of the dialog box are two buttons: "OK" and "Cancel".

Figure 3. Connect to addhost.its.monash.edu.au

Step 2 - Continued

Once you have typed in your user name and password and clicked OK, the page in Figure 4 will display.

The “*adaptor address*” that you noted down previously must now be entered into the Ethernet address box.

Then enter your phone number in the Contact Information box and then press the “**Register**” button on the top row.

If you have previously registered and need to change the Ethernet address then the button at the end of the row will be labeled “**Modify**”. Change your Ethernet address and contact details and then click on the “**Modify**” button.

Note. It will take Monash about 30 minutes to update this information before you are able to connect to the network.

Self registration (ITS) - Windows Internet Explorer
http://addhost.its.monash.edu.au/cgi-bin/register

File Edit View Favorites Tools Help

Self registration (ITS)

MONASH University

Monash home | About Monash | Faculties | Campuses | Contact Monash

Staff directory | A-Z index | Site map

Monash University > ITS > Students > Wireless

Network self registrations for usercode "sbmel1", AdminAffil "eng-stud", MRS Affil "NONE"

The self-registration scheme has been changed from the beginning of 2006.
Students enrolled in a course can self-register one Ethernet card for wireless use.
Also, residents in MRS accomodation can self-register one Ethernet card for wired use.
Staff can not create new self-rjistrations for themselves.
For extra self-registrations, contact your local MRS or Faculty IT Support or TWP representative.

Your Network Self Registrations

Hostname	Ethernet address	Contact information	Connection	
sbmel1-self.mannix	<input type="text" value="00132096518f"/>	<input type="text" value="Your Contact Information"/>	Unknown	<input type="button" value="Register"/>
sbmel1-wlan-self.eng	<input type="text" value="none"/>	<input type="text" value="none"/>	none	<input type="button" value="Register"/>

Note: The Ethernet address must be 12 hexadecimal (0..9 or a..f) characters long (if necessary, insert leading 0's to make 6 pairs of digits).
Note: It takes 30 minutes before any new or changed registration will work on the network.
The Contact information may be used to contact you if some problem is found with your network registration, or with your computer's use of the network.

Figure 4. addhost page.

Step 3 - Installing TCP/IP

The internet protocol TCP/IP needs to be installed on your computer for you to be able to connect to the Mannix College Network. To check whether you already have or need to install TCP/IP complete the following steps

- a. On the Desktop or Start Menu you will see the “**Network Neighborhood**” icon. Right click on this icon and then select “**Properties**” on the drop down menu as shown in Figure 5. (Alternatively you can go to the Control Panel and click on the Network Connections icon).



Fig 5. Network Neighborhood/Properties

- b. The Network information dialog box will then display as can be seen in Figure 6.

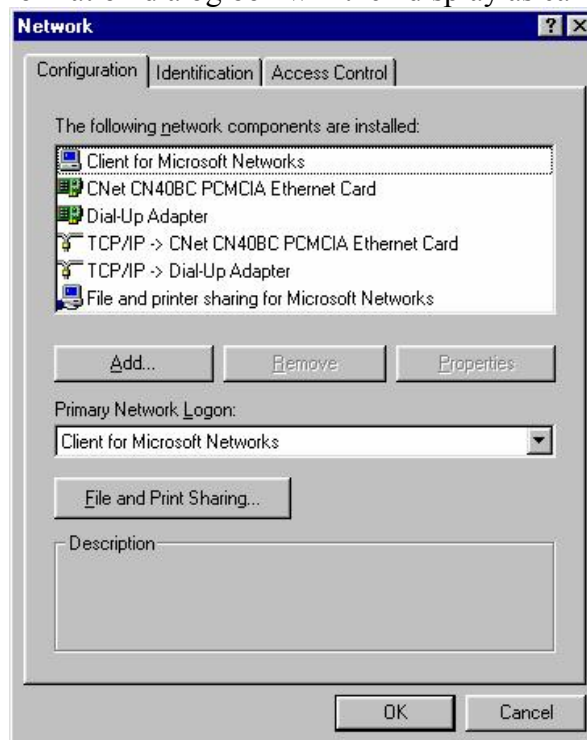


Fig 6, Network information dialog

- c. From Figure 6 you can see if your computer has TCP/IP installed for that network connection. If it is installed go to Step 4 below. If it is not installed click the “**Install...**” button on the “Local Area Connection Properties” dialog box. To connect to the Mannix College Network the “*Primary Network Logon*” has to be “**Client for Microsoft Networks**”
- d. The “Select Network Component Type” dialog box will display as shown in Figure 7. Click the “**Protocol**” logo to select it as shown in Figure 7. Then click the “**Add...**” Button.

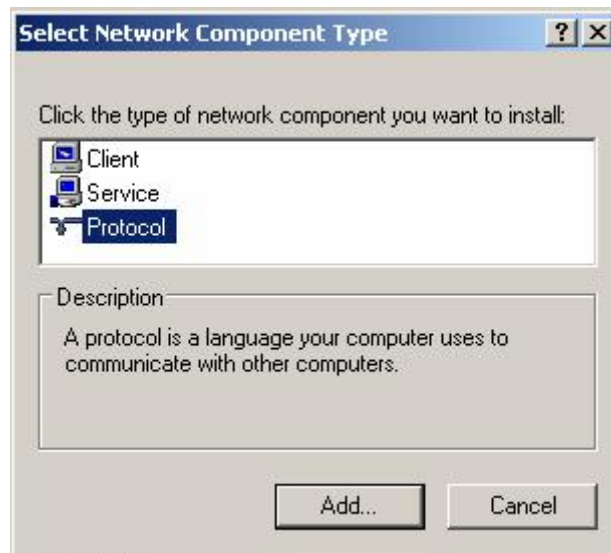


Fig 7. Select Network Component Type

- e. The “Select Network Protocol” dialog box will then display as shown in Figure 8. Select “**Microsoft**” as the Manufacturer and “**TCP/IP**” as the Network Protocol and then click the “**OK**” button. This will install TCP/IP on your computer; you may be required to restart the computer once this has happened.

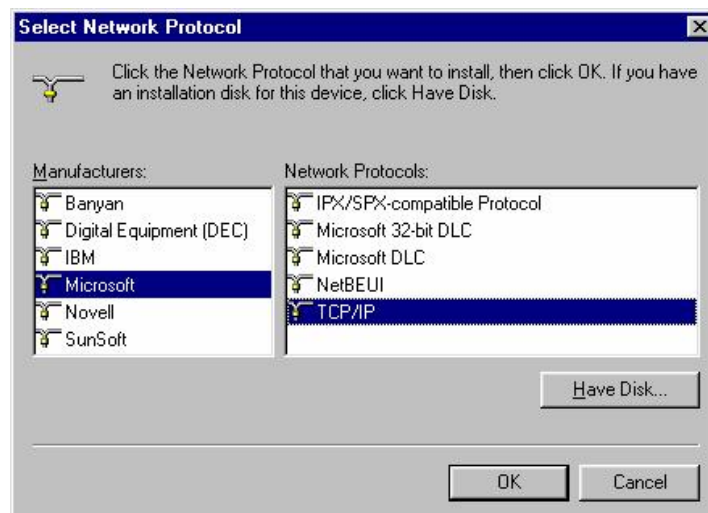


Figure 8. Select Network Protocol

Step 4 - Modify Your Computer Settings.

a. *Changing computer name and Workgroup.*

In Figure 6 you will see that there is an “Identification” tab Click on it, It should look similar to what can be seen in Figure 9.

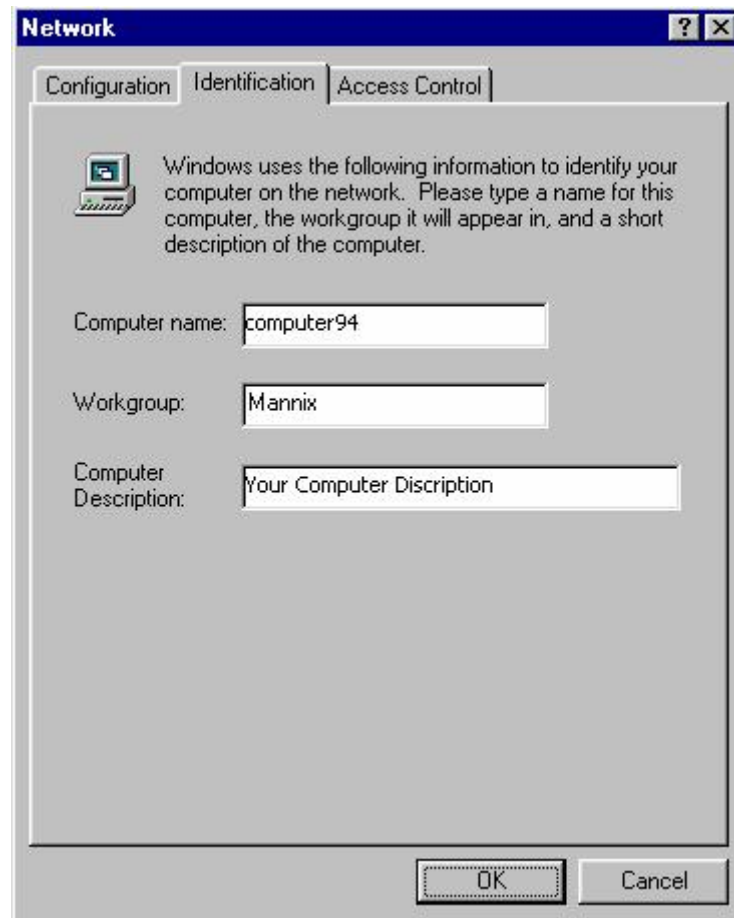


Fig 9, Network / Identification

b. Firstly, you will need to enter your computer name. This will be the name of your computer on the Mannix network. For security reasons it is best not to use your own name as your computer name. A more secure name such as **Computer94** would be more appropriate.

Secondly, to connect to the Mannix College Network you have to type in “**MANNIX**” as shown in Figure 9 above into the Workgroup text box.

Once you have completed these three tasks, click on the “OK” button. Your computer will then need to be restarted to enable the name changes to be implemented.

Thirdly, Enter a Computer Description (i.e. Sam’s Computer) for your computer in the Computer Description text box.

Once you have completed these three tasks, click on the “OK” button. Your computer will then need to be restarted to enable the name changes to be implemented.

Step 5 – Modify the Connection Settings for Internet Explorer

- a. On the computer Desktop you will see the “*Internet Explorer*” logo. Right click on the logo and then select “**Properties**” on the drop down menu.

The “Internet Properties” dialog box will then display; click on the “**Connections**” tab; shown in Figure 10 below.

Then Click on the “**LAN Settings**” button shown in Figure 10 below.

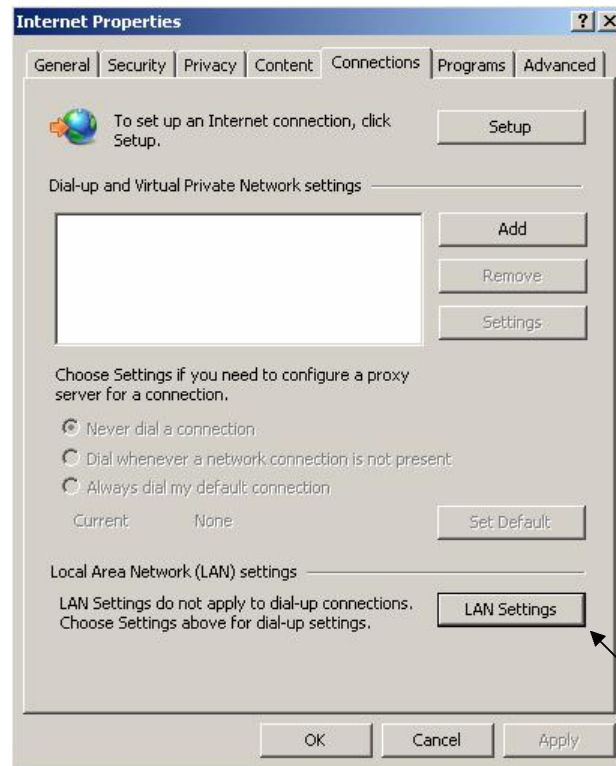


Figure 10. Internet Properties/ Connections

- b. The Local Area Network (LAN) Settings dialog box will then display as shown in Figure 11 below.

In the “*Automatic configuration*” box you need to tick “**Automatically detect settings**” and “**Use automatic configuration script**” as in Figure 11. Finally in the address box you need to enter the following address:

<http://www.monash.edu.au/proxy.pac>

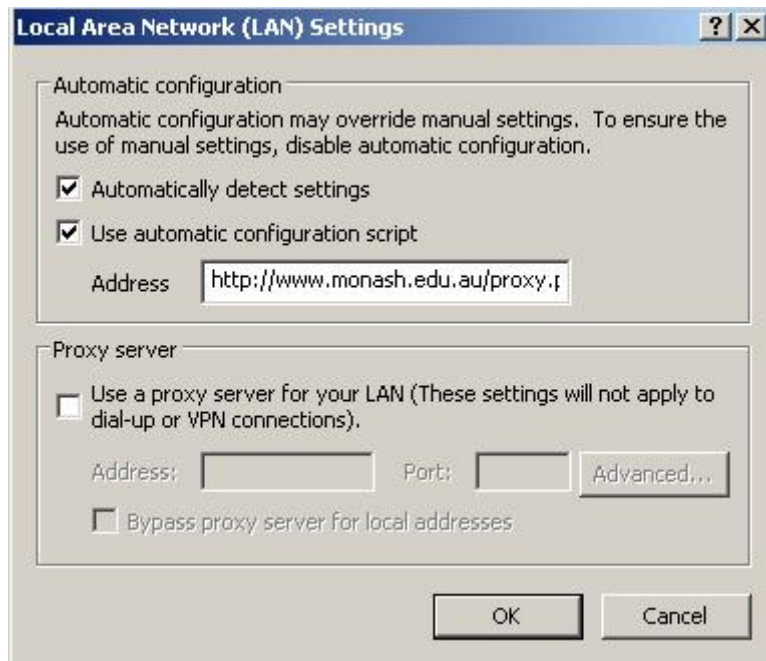


Figure 11. Local Area Network (LAN) Settings menu

Then click the “**OK**” button. You have finished configuring your computer and you should now be able to connect to the Internet via the Mannix College Network.